

**Ministry of Higher Education**

## **Update on NODES**

**Mr.. N. S. Abeyawardena**  
**Project Director**

**Distance Education Modernization Project**  
**Funded by the**  
**Asian Development Bank**

# NODES

## National Online Distance Education Service

**NOC**      **Network Operation Centre**

**DNAC**      **Demonstration NODES Access Centre**

**CDU**      **Content Development Unit**

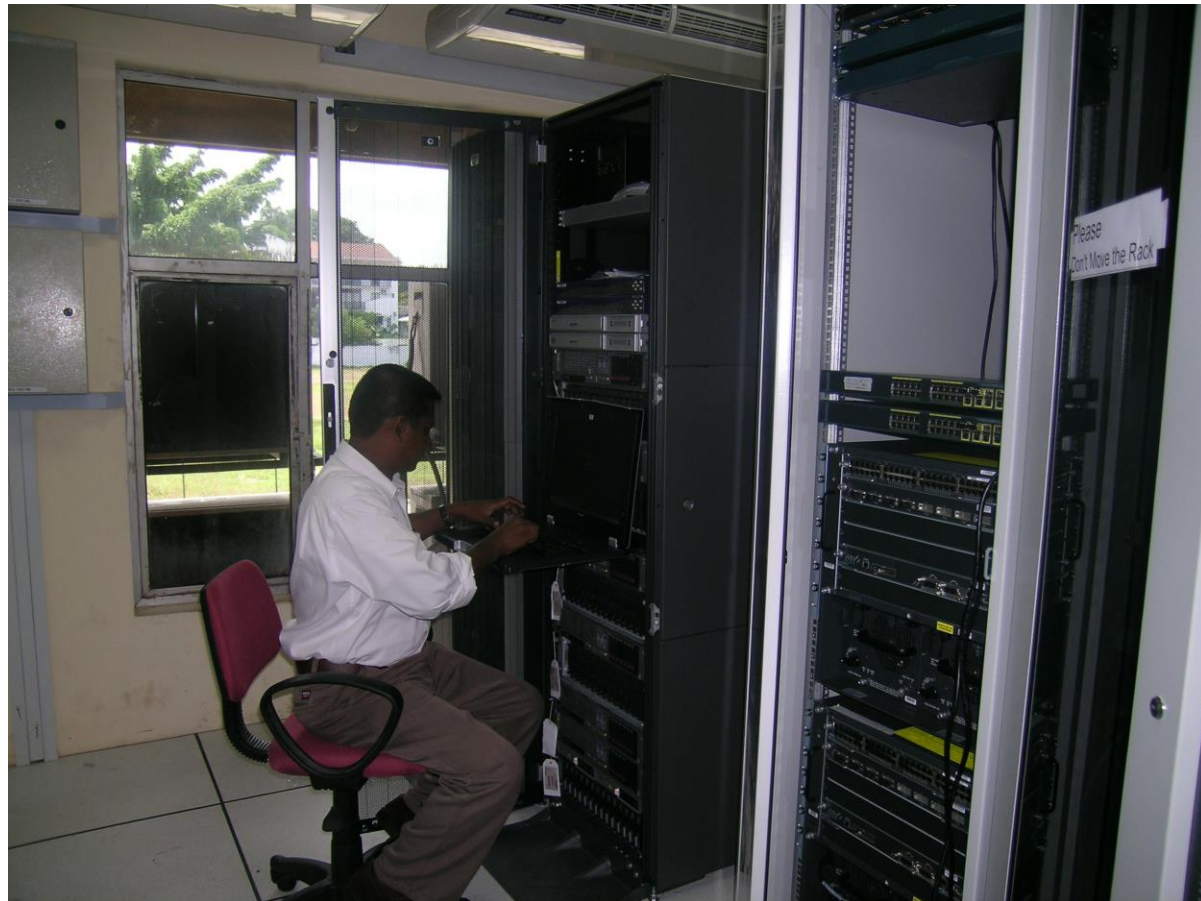
**NAC**      **NODES Access Centre**

# NODES

# NOC

## Network Operation Centre

*Hosts and delivers  
online education  
programmes of  
partner Institutes  
(PIs) to students at  
NACs*



# DNAC

## Demonstration NODES Access Centre

- *The template of a typical NODES Access Centre which provides guidance, Feel, and accessibility of the NODES for newcomers.*
- *This will be the central hub for delivering Video Conferencing Sessions to all NACs.*
- *Also, Training on the LMS (Moodle) will be provided here*



# CDU

## Content Development Unit

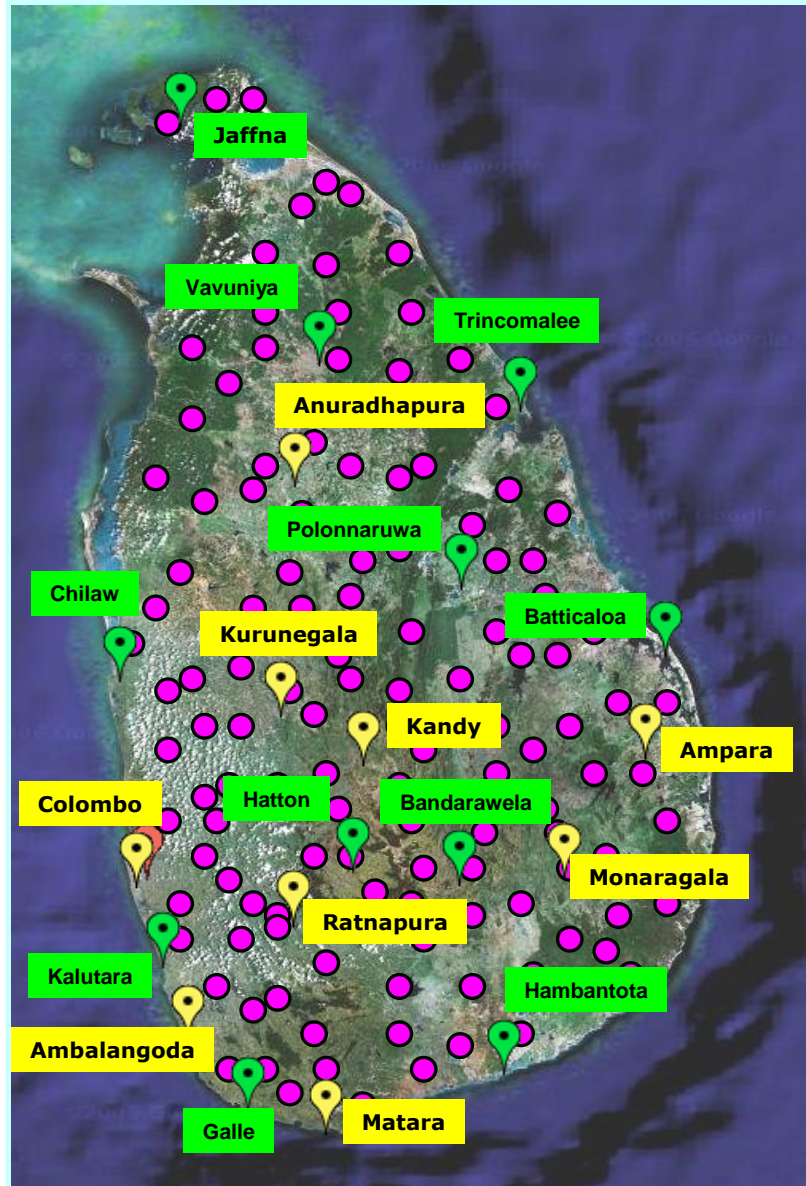
- *This will be the central facility for any of the PIs to get support for designing and developing online content*
- *Expert support on the areas of Instructional Design, Web development, graphic animations, video editing etc. will be available here*
- *This unit will take over content development for PIs which do not have in house capacity at a cost*









# NACs

## *Locations of NACs*



## *NODES Access Centres*

-  Network Operating Centre
-  Round 1 Access Sites
-  Round 2 Access Sites
-  Future Plans – 150 Sites Nationwide

# NAC

## NODES Access Centre

- NACs provide a service to institutions to get their programmes to students
- NACs will be the front end which will deal with the students on on-line NODES operations

*The first 9 NACs at OUSL premises*

1. Colombo
2. Rathnapura
3. Matara
4. Kurunegala
5. Ambalangoda
6. Anuradhapura
7. Kandy
8. Ampara
9. Monaragala

*Ambalangoda NAC*





**AMPARA**



**ANURADHAPURA**



**KURUNEGALA**



**MONARAGALA**



**MATARA**





**RATHNAPURA**



**KANDY**



**COLOMBO**



**Target : Nationwide 150 outlets (NACs)**

- Presently have 10 fully developed NACs (with DNAC)**
- Another 15 in 2007 – 25 in 2008 – 100 in 2009**
- Also 150 PIs are targeted**

# NAC Facilities

- **High Speed Local Band Width**
- **High Speed Internet Band Width**
- **Scanning**
- **Printing**
- **Video Conferencing**
- **Helpful local staff**

## Facilities

# The National Network

- **GROWING TO NATIONWIDE**
- **SLT backbone – 45 expandable to 155 Mbps**
- **Internet bandwidth – 10 expandable to 45 Mbps**
- **Local bandwidth at DNAC – 10 Mbps**
- **Local bandwidth at NACs – 2 expandable to 10Mbps**

**These high bandwidths for education  
have been established for the 1<sup>st</sup> time  
covering whole Sri Lanka**

## Connection



# DEMP Aids

- Provide assistance to OUSL to increase present student population of 25,000 to minimum of 50,000 by 2009
- Provide assistance to public universities having 169,000 external degree students with large drop-out rates for the improvement of quality, delivery and student support
  - ◆ Grants to develop / convert programme material to on-line web based and mixed modes.
  - ◆ Acquisition of ICT equipment, software, course content, network connections to improve modes of course delivery.
  - ◆ Institutional material exchange, foreign and local.
  - ◆ DEMP would provide financial assistance to external degree students to follow on-line programmes

# Public-Private Partnership

## Matching Grants

- Matching Grants for private / professional educational institutions that demonstrate higher enrollments to ODL programmes – Max US\$ 25,000
- Full financial assistance to public sector educational institutions that demonstrate higher enrolments to ODL programmes – Max US \$ 50,000
- Total allocation available - US \$ 3.5 million for 150 programmes

# Why Matching Grants

- To encourage private & public Institutions to participate and adopt ODL through modern technologies.
- Provide services to larger number of students in all districts with out spending on infrastructure , academics and facilities.
- Market your own institution and programmes, promote competition among institutions and develop marketable products.



**Thank You**

**Mr.. N. S. Abeyawardena**  
**Project Director**